

## Proteus Mini

### User Manual

EN

#### DISCLAIMER

Please read this user manual before use. Failure to follow the instructions for proper setup, use, and care for your device can increase the risk of serious personal injury, death, or property damage.

The manufacturer assumes no responsibility for any damage caused by mishandling that is beyond normal usage defined in this manual.

#### RECOMMENDED SETUP

We recommend the exclusive use of Aspire original charger, battery, components, and accessories indicated on the product page and leaflet. Use of chargers, batteries, components, and/or accessories not specifically produced for this device may lead to malfunction and/or damage to the product and to the cancellation of the warranty.

#### HANDLING AND USAGE SAFETY

To reduce the risk of fire, shock, or damage to your vape device keep the product and its accessories away from overheated or excessively humid conditions (-5° C / 50 ° C).

Your device can be damaged if dropped, burned, punctured, crushed, or if it comes in contact with liquid. If you suspect damage to your device or its battery, discontinue use of your device, as it may cause overheating or injury.

To avoid misfiring always ensure you either lock or switch off your device when it is not in use, especially when carrying your device in your pocket, bag, or purse.

In the case of burnt or abnormal deformation of one of the components of the device or its accessories, stop using it immediately and contact Customer Care.

#### COIL MAINTENANCE SAFETY

In order not to damage the coil or burn the cotton do not inhale an empty pod. Let the pod/tank stand for 5 minutes after filling so the cotton can be saturated with e-liquid before use.

#### REPLACEABLE BATTERIES SAFETY

Do not use non-rechargeable batteries, Do not use damaged batteries or batteries with a torn or damaged wrapper. Disconnect the battery from the charger when fully recharged. Do not use your vape device while charging.

#### PRODUCT DISPOSAL SAFETY

Do not discard this product and battery in the environment, and only dispose of the product components at dedicated collection/disposal points.

#### HEALTH WARNING SAFETY

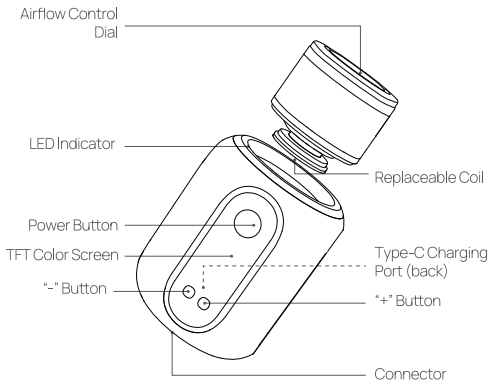
Do not use the product if you are pregnant, breastfeeding, generally ill, or suffer from respiratory and/or cardiovascular system disorders.

If you experience any side effects discontinue using the product, if the effect(s) continue after you stop using, consult a healthcare professional immediately.

#### Package Contents:

- 1 \* Proteus Mini E-hookah Head
- 1 \* Proteus Mini Tank
- 1 \* Proteus Mini Meshed Coil 0.25Ω (Preinstalled)
- 1 \* Sealing Silicone
- 1 \* Type-C Cable
- 1 \* User Manual

#### Components View:



#### Specifications:

**Dimensions:** 90 \* 63 \* 58,8 mm

**Tank Capacity:** 10 mL

**Airflow:** Adjustable top airflow

**E-liquid Filling:** Easy side fill

**Coil Compatibility:** Proteus Mini Meshed Coil 0,25 Ω  
Proteus Neo Meshed Coil 0,17 Ω

**Wattage Range:** 5-80W

**Battery Capacity:** Built-in 3000 mAh

**Activation:** Auto-draw

**Charging Port:** Type-C

**Max Charge Current:** 2A

#### Tank Filling:

1. Remove the tank from the device
2. Open the side silicone of tank
3. Add e-liquid into tank
4. Plug back the silicone seal firmly as soon as possible

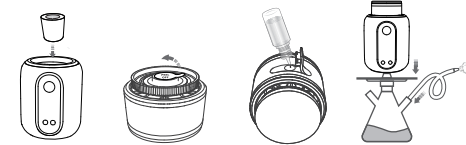


#### E-Liquid Requirements:

Nicotine Strength: Optimal nicotine strength ranges from 0 to 3 mg / ml  
PG/VG Ratio: The recommended PG/VG ratio is 30/70  
Waiting Time: To ensure full saturation of the e-liquid through the coil, wait for 5-10 mins after filling

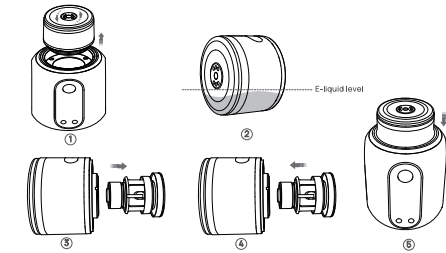
#### E-hookah Set-up Instructions

1. Install the silicone adapter for your e-hookah head
2. Remove sticker from coil at the bottom of tank
3. Fill the tank as instructions above
4. Turn on the e-hookah head
5. Just inhale and enjoy it



#### Coil Replacement:

1. Completely close airflow
2. Remove the tank from the device
3. Tilt tank on its side opposite of silicone fill plug. Make sure e-liquid is below the airflow in center of tank
4. Install new coil, and wipe off any excess liquid
5. Replace tank on device---wait 5 minutes for coil to saturate---your device is now ready to use



Remember to clean the condensation between the tank and the device.



#### Instructions:

Turn on	Quickly press the power button 5 times, the device will display "aspire"
Turn off	Quickly press the power button 5 times, the device will display "SHUT DOWN"
Connect the tank	The LED indicator will breathe white once and the screen will display "NEW ATOMIZER"
Disconnect the tank	The LED indicator will breathe white once
Adjust wattage	1.Press "+" / "-" button to adjust the wattage, 1W up / down per adjustment 2.Long press "+" / "-" button to adjust the wattage, 1W rapid up / down
Screen brightness adjustment	On the main interface, press the power button 3 times quickly to enter the screen brightness adjustment menu, then press "+" / "-" button to adjust the screen's brightness among 33 levels.  How to confirm the current setting? 1.Long press the power button 2.Wait for 3 seconds
Battery level indicate on screen	Battery level < 0%---empty bar Battery level = 0-20%---one bar Battery level = 21-40%---two bars Battery level = 41-60%---three bars Battery level = 61-80%---four bars Battery level = 81-100%---five bars

Atomizer selection and confirmation	When the device connects to the atomizer, an atomizer confirmation interface will appear. Press the "+" button to confirm the new atomizer, which will automatically recommend a default power setting of 45W. Press the "-" button to select and confirm the previous atomizer, retaining its last adjusted power setting. Note that pressing the "power button" will have no effect during this process.
Clear shisha puffs	On the main interface, press the "+" and "-" buttons simultaneously to clear the shisha puffs

#### Safety Features:

Vaping Over-Time Protection (8s)	The screen will display "8S OVER TIME"
Open Circuit Protection	The screen will display "CHECK ATOMIZER"
Short Circuit Protection	The screen will display "ATOMIZER SHORT"
Low Resistance Protection	The screen will display "LOW RES"
Low Voltage Protection	The screen will display "LOW BATTERY"
Overcharge Protection	The device will stop charging
Over Heat Protection	The screen will display "TOO HOT"
Abnormal Charge Protection	The screen will display "CHECK USB"

#### Charging:

Maximum charge current	2A
Recommended charge voltage	5V
Attach the type-C cable	The screen will display a growing battery icon  Battery level: 0%-30%---the LED indicator will breathe red Battery level: 30%-60%---the LED indicator will breathe blue Battery level: 60%-100%---the LED indicator will breathe green
Fully charged	The screen will be on for 10s and then shut off
The charging voltage is over 6V or lower than 4.2V	The mod will stop charging, the screen will display "CHECK USB" for 5s and the LED indicator will flash red 3 times
If you shisha while charging, the battery will stop charging to ensure safety	

#### IMPORTANT INFORMATION ABOUT USING NICOTINE-CONTAINING E-LIQUIDS

Before using nicotine-containing e-liquid the user should read the following information carefully.

##### 1. NICOTINE-CONTAINING E-LIQUID:

If used with nicotine-containing liquid, it should be noted that nicotine which is a highly addictive substance and, therefore, is not recommended for use by non-smokers may produce toxic effects if consumed orally, especially in infants or children.

Do not use if you are allergic to nicotine or any of the other ingredients contained within the e-liquid (see manufacturer's label for full details).

##### 2. NICOTINE WARNINGS AND PRECAUTIONS

Nicotine-containing E-liquid is not recommended for:

- Non-smokers
- Young people under the legal age
- Pregnant or breast-feeding women; as nicotine is known to cross the placenta and to be excreted in breast milk

##### 3. CONTRAINDICATIONS

- Those experiencing general ill health; such as heart disease, stomach, and duodenal ulcers, liver or kidney problems, long term throat disease, or difficulty breathing due to bronchitis, emphysema, or asthma
- Those who have an overactive thyroid gland or have a pheochromocytoma (a tumor of the adrenal gland that can affect high blood pressure)
- Those who have diabetes, nicotine may affect your blood sugar levels.
- Those taking the following medication:
  - Theophylline (to treat breathing problems)
  - Ropinirole (to treat restless leg syndrome)
  - Clozapine (to treat schizophrenia)

#### 4. POSSIBLE SIDE EFFECTS

If you inhale too much nicotine or use the product too much you may experience one or more of the following effects:

- Feeling faint
- Nausea (feeling sick)
- Headache
- Coughing
- Irritation of the mouth or throat
- Dizziness
- Stomach discomfort
- Hiccups
- Nasal congestion
- Vomiting
- Arrhythmias in the chest
- Abnormal heartbeats

#### WARRANTY

Please visit our official website below to know our warranty policy and find an official after-sale support center in your country:  
<https://www.aspirecig.com/support/service-center/>

If your region doesn't have a support center, you can contact the retailer for service as normal.

#### Important Information:

When requesting for warranty claims, kindly provide receipts or invoice purchased from vendor. Please also keep the original box containing the serial number and security code, or batch code for verification.

For detailed operating instructions, please visit:  
Manual: <https://www.aspirecig.com/support/download>  
Video: <https://www.youtube.com/c/Aspirecigs>



\*Diameter of the pod refill hole.

#### Shenzhen Eigate Technology Co., Ltd.

Floor 1-4, Building 3, No.14, Jian'an Road, Shajing Sub-district, Bao'an District, Shenzhen, Guangdong Province, China  
Tel: +86-755-81499783  
Email: [service@aspirecig.com](mailto:service@aspirecig.com)



**MADE IN CHINA**  
Manufactured by Eigate