

## Cloudflask X

USER MANUAL

### EN

#### DISCLAIMER

Please read this user manual before use. Failure to follow the instructions for proper setup, use, and care for your device can increase the risk of serious personal injury, death, or property damage.

The manufacturer assumes no responsibility for any damage caused by mishandling that is beyond normal usage defined in this manual.

#### RECOMMENDED SETUP

We recommend the exclusive use of Aspire original charger, battery, components, and accessories indicated on the product page and leaflet. Use of chargers, batteries, components, and/or accessories not specifically produced for this device may lead to malfunction and/or damage to the product and to the cancellation of the warranty.

#### HANDLING AND USAGE SAFETY

To reduce the risk of fire, shock, or damage to your vape device keep the product and its accessories away from overheated or excessively humid conditions (-5° C / 50° C).

Your device can be damaged if dropped, burned, punctured, crushed, or if it comes in contact with liquid. If you suspect damage to your device or its battery, discontinue use of your device, as it may cause overheating or injury.

To avoid misfiring always ensure you either lock or switch off your device when it is not in use, especially when carrying your device in your pocket, bag, or purse.

In the case of burnt or abnormal deformation of one of the components of the device or its accessories, stop using it immediately and contact Customer Care.

#### COIL MAINTENANCE SAFETY

In order not to damage the coil or burn the cotton do not inhale an empty pod. Let the pod/tank stand for 5 minutes after filling so the cotton can be saturated with e-liquid before use.

#### REPLACEABLE BATTERIES SAFETY

Do not use non-rechargeable batteries. Do not use damaged batteries or batteries with a torn or damaged wrapper. Disconnect the battery from the charger when fully recharged. Do not use your vape device while charging.

#### PRODUCT DISPOSAL SAFETY

Do not discard this product and battery in the environment, and only dispose of the product components at dedicated collection/disposal points.

#### HEALTH WARNING SAFETY

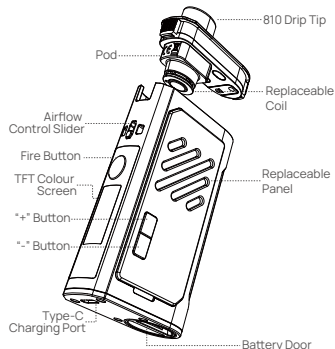
Do not use the product if you are pregnant, breastfeeding, generally ill, or suffer from respiratory and/or cardiovascular system disorders.

If you experience any side effects discontinue using the product, if the effect(s) continue after you stop using, consult a healthcare professional immediately.

#### Contents:

- 1 \* Cloudflask X Device
- 1 \* Cloudflask X Pod (5.0 ml)
- 1 \* Cloudflask 0.25Ω Meshed coil (Preinstalled)
- 1 \* Type-C Cable
- 1 \* User Manual

#### Components View:

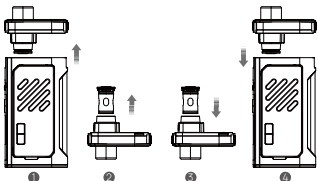


#### Specifications:

Dimensions: 98 \* 49 \* 27.8 mm  
Pod Capacity: 5.0 ml  
Fill: Easy bottom fill  
Coils' Compatibility:  
Cloudflask 3 0.17Ω Meshed coil (50-60W)  
Cloudflask S 0.6Ω Meshed coil (15-20W)  
Cloudflask 0.25Ω Meshed coil (40-50W)  
Battery Type: External single 18650 battery (battery not included)  
Wattage Range: 5-75W  
Screen: 0.96" TFT colour screen  
Activation: Button activated  
Output Mode: Wattage, Voltage, Bypass  
Charging Port: Type-C  
Max Charge Current: 2A

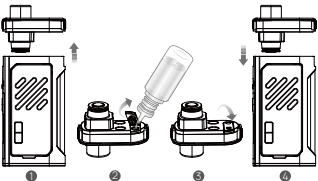
#### Coil Replacement:

1. Pull to remove the pod
2. Pull the used coil out
3. Push the new coil into the pod
4. Place the pod back



#### Pod Filling:

1. Remove the pod from the device
2. Pull the bottom silicone seal, fill the e-liquid into the pod directly
3. Close the silicone seal
4. Put the pod into the groove joint of the device



Remember to clean the condensation between the pod and the device.



#### Instructions:

Turn on	Quickly press the fire button 5 times, the device will display 'aspire'
Turn off	Quickly press the fire button 5 times, the device will display 'SHUT DOWN'
Lock or unlock '+' & '-' buttons	Press the '+' & '-' buttons simultaneously to lock or unlock the buttons. When the '+' & '-' buttons are locked, only the fire button works.
Lock or unlock the device	Press fire button 3 times continuously, the device will display 'LOCKED' for 3s and enter dormant states. (Only turn on / off function allowed in this state).
	Press fire button 3 times continuously when the device is locked, the device will display 'UNLOCKED' for 3s and enter the main interface.
	When charging the device under dormant state and the screen is off 1. For the first time, press the fire button once, the device will display 'LOCKED'. 2. For the first time, press '+' / '-' button once, the device will display the charging interface. Press any button again, the device will display 'LOCKED'.

Screen brightness adjustment	Press fire button and '+' button simultaneously at the main interface to enter the screen brightness adjustment interface, then press '+' / '-' button to adjust the screen's brightness among 33 levels.
Battery Level Indicate on Screen	How to confirm the current setting? 1. Press the fire button once 2. Wait for 3 seconds  Battery level < 0% -- empty bar Battery level = 0-20% -- one bar Battery level = 21-40% -- two bars Battery level = 41-60% -- three bars Battery level = 61-80% -- four bars Battery level = 81-100% -- five bars

#### Parameters Setting:

Step 1:  
Enter the main interface, the screen will display "BATTERY LEVEL", "MODE", "WATTAGE", "VOLTAGE", "CURRENT", "RESISTANCE" and "PUFFS".

Step 2:  
\* Press fire button and '+' button simultaneously to enter the menu adjustment;  
\* Immediately press fire button to switch the menu adjustment from top to bottom;  
\* Press '+' / '-' button to select the output modes among WATT, VOLTAGE, BYPASS.  
\* Long press the fire button or wait 4 seconds to confirm and keep the settings.

#### Setting:

Mode	Adjustment range	Operation and value setting
WATT	5-75W (Default: 5W)	Press '+' / '-' button 0.5W up / down per adjustment
		Long press '+' / '-' button 1W rapid up / down
VOLTAGE	0.5-8.4V (Default: 4.65V)	Press '+' / '-' button 0.01V up / down per adjustment
		Long press '+' / '-' button 0.1V rapid up / down
BYPASS	The device will output the most the mod can do with the resistance of the coil on it.	

Under any mode, when switching to 'Puff', pressing the '+' or '-' button once, the puffs will return to the default value of 0000, and will only update present vaping puffs if you vape.

#### Safety Features:

Vaping Over-Time Protection (10s)	The screen will display "10S OVER TIME"
Open Circuit Protection	The screen will display "CHECK ATOMIZER"
Short Circuit Protection	The screen will display "ATOMIZER SHORT"
Low Resistance Protection	The screen will display "LOW RES"
Low Voltage Protection	The screen will display "LOW BATTERY"
Overcharge Protection	The device will stop charging
Over Heat Protection	The screen will display "TOO HOT"
Abnormal Charge Protection	The screen will display "CHECK USB"
Battery Reverse Protection	The device will stop working

#### Battery Installation:



#### Charging:

Maximum charge current	2A
Recommended charge voltage	5V
Attach the type-C cable	The screen will display a growing battery icon
Fully charged	The screen will be on for 10s and then shut off
The charging voltage is over 6V or lower than 4.2V	The mod will stop charging and the screen will display "CHECK USB" for 5s
If you press the fire button while charging, the battery will stop charging to ensure safety	

#### IMPORTANT INFORMATION ABOUT USING NICOTINE-CONTAINING E-LIQUIDS

Before using nicotine-containing e-liquid the user should read the following information carefully.

#### 1. NICOTINE-CONTAINING E-LIQUID

If used with nicotine-containing liquid, it should be noted that nicotine which is a highly addictive substance and, therefore, is not recommended for use by non-smokers may produce toxic effects if consumed orally, especially in infants or children.

Do not use if you are allergic to nicotine or any of the other ingredients contained within the e-liquid (see manufacturer's label for full details).

#### 2. NICOTINE WARNINGS AND PRECAUTIONS

Nicotine-containing E-liquid is not recommended for:

- Non-smokers
- Young people under the legal age;
- Pregnant or breast-feeding women; as nicotine is known to cross the placenta and to be excreted in breast milk;

#### 3. CONTRAINDICATIONS

- Those experiencing general ill health; such as heart disease, stomach, and duodenal ulcers, liver or kidney problems, long term throat disease,

or difficulty breathing due to bronchitis, emphysema, or asthma;

- Those who have an overactive thyroid gland or have a pheochromocytoma (a tumor of the adrenal gland that can affect high blood pressure);
- Those who have diabetes, nicotine may affect your blood sugar levels;
- Those taking the following medication:
  - \* Theophylline (to treat breathing problems)
  - \* Ropinirole (to treat restless leg syndrome)
  - \* Clozapine (to treat schizophrenia)

#### 4. POSSIBLE SIDE EFFECTS

If you inhale too much nicotine or use the product too much you may experience one or more of the following effects:

- Feeling faint
- Nausea (feeling sick)
- Headache
- Coughing
- Irritation of the mouth or throat
- Dizziness
- Stomach discomfort
- Hiccups
- Nasal congestion
- Vomiting
- Arrhythmias in the chest

### WARRANTY

Please visit our official website below to know our warranty policy and find an official after-sale support center in your country:  
<https://www.aspirecig.com/support/service-center/>

If your region doesn't have a support center, you can contact the retailer for service as normal.

#### Important Information:

When requesting for warranty claims, kindly provide receipts or invoice purchased from vendor. Please also keep the original box containing the serial number and security code, or batch code for verification.

For detailed operating instructions, please visit:

Manual: <https://www.aspirecig.com/support/download>  
Video: <https://www.youtube.com/c/Aspirecigs>

#### Shenzhen Eigate Technology Co., Ltd.

Floor 1-4, Building 3, No.14, Jian'an Road, Shajing Sub-district, Bao'an District, Shenzhen, Guangdong Province, China  
Tel: +86-755-81499783  
Email: [service@aspirecig.com](mailto:service@aspirecig.com)

To learn more about our products and how to use, please visit:  
[www.aspirecig.com](http://www.aspirecig.com)