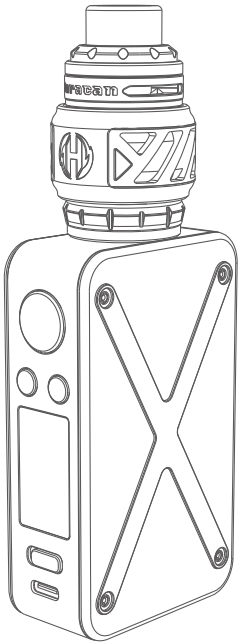


aspire



REVOLTO User Manual

EN

DISCLAIMER

Please read this user manual before use. Failure to follow the instructions for proper setup, use, and care for your device can increase the risk of serious personal injury, death, or property damage.

The manufacturer assumes no responsibility for any damage caused by mishandling that is beyond normal usage defined in this manual.

RECOMMENDED SETUP

We recommend the exclusive use of Aspire original charger, battery, components, and accessories indicated on the product page and leaflet. Use of chargers, batteries, components, and/or accessories not specifically produced for this device may lead to malfunction and/or damage to the product and to the cancellation of the warranty.

HANDLING AND USAGE SAFETY

To reduce the risk of fire, shock, or damage to your vape device keep the product and its accessories away from overheated or excessively humid conditions (<5°C / 50 °C).

Your device can be damaged if dropped, burned, punctured, crushed, or if it comes in contact with liquid. If you suspect damage to your device or its battery, discontinue use of your device, as it may cause overheating or injury.

To avoid misfiring always ensure you either lock or switch off your device when it is not in use, especially when carrying your device in your pocket, bag, or purse.

In the case of burnt or abnormal deformation of one of the components of the device or its accessories, stop using it immediately and contact Customer Care.

COIL MAINTENANCE SAFETY

In order not to damage the coil or burn the cotton do not inhale an empty pod. Let the pod/tank stand for 5 minutes after filling so the cotton can be saturated with e-liquid before use.

REPLACEABLE BATTERIES SAFETY

Do not use non-rechargeable batteries. Do not use damaged batteries or batteries with torn or damaged wrapper. Disconnect the battery from the charger when fully charged. Do not use your vape device while charging.

PRODUCT DISPOSAL SAFETY

Do not discard this product and battery in the environment, and only dispose of the product components at dedicated collection/disposal points.

HEALTH WARNING SAFETY

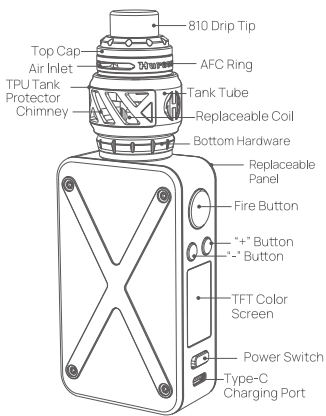
Do not use the product if you are pregnant, breastfeeding, generally ill or suffer from respiratory and/or cardiovascular system disorders.

If you experience any side effects discontinue using the product, if the effect(s) continue after you stop using, consult a healthcare professional immediately.

Package Contents:

- 1* Revolto Mod
- 1* Huracan Tank
- 1* BP Meshed Coil 0.3Ω (preinstalled)
- 1* BP Meshed Coil 0.17Ω
- 1* TPU Tank Protector
- 1* Spare Glass Tube
- 1* O-rings Pack
- 1* Type-C Cable
- 1* User Manual

Components View:



Kit Dimensions: 141.6 * 53.7 * 27 mm

Kit Specifications

810 replaceable drip tip

Tank Capacity: 6.0 ml

E-liquid Filling: Screw-to-open top fill

Airflow: Rotate to adjust airflow

Compatible with BP series coil:

BP Meshed Coil-0.15Ω (60-80W)

BP Meshed Coil-0.17Ω (45-55W)

BP Meshed Coil-0.3Ω (35-40W)

BP Meshed Coil-0.3Ω (35-40W)

BP Meshed Coil-0.3Ω (35-40W)

BP Meshed Coil-0.3Ω (35-40W)

BP Meshed Coil-0.3Ω (35-40W)

BP Meshed Coil-0.3Ω (35-40W)

BP Meshed Coil-0.3Ω (35-40W)

BP Meshed Coil-0.3Ω (35-40W)

BP Meshed Coil-0.3Ω (35-40W)

BP Meshed Coil-0.3Ω (35-40W)

BP Meshed Coil-0.3Ω (35-40W)

BP Meshed Coil-0.3Ω (35-40W)

BP Meshed Coil-0.3Ω (35-40W)

BP Meshed Coil-0.3Ω (35-40W)

BP Meshed Coil-0.3Ω (35-40W)

BP Meshed Coil-0.3Ω (35-40W)

BP Meshed Coil-0.3Ω (35-40W)

BP Meshed Coil-0.3Ω (35-40W)

BP Meshed Coil-0.3Ω (35-40W)

BP Meshed Coil-0.3Ω (35-40W)

BP Meshed Coil-0.3Ω (35-40W)

BP Meshed Coil-0.3Ω (35-40W)

BP Meshed Coil-0.3Ω (35-40W)

BP Meshed Coil-0.3Ω (35-40W)

BP Meshed Coil-0.3Ω (35-40W)

BP Meshed Coil-0.3Ω (35-40W)

BP Meshed Coil-0.3Ω (35-40W)

BP Meshed Coil-0.3Ω (35-40W)

BP Meshed Coil-0.3Ω (35-40W)

BP Meshed Coil-0.3Ω (35-40W)

BP Meshed Coil-0.3Ω (35-40W)

BP Meshed Coil-0.3Ω (35-40W)

BP Meshed Coil-0.3Ω (35-40W)

BP Meshed Coil-0.3Ω (35-40W)

BP Meshed Coil-0.3Ω (35-40W)

BP Meshed Coil-0.3Ω (35-40W)

BP Meshed Coil-0.3Ω (35-40W)

BP Meshed Coil-0.3Ω (35-40W)

BP Meshed Coil-0.3Ω (35-40W)

BP Meshed Coil-0.3Ω (35-40W)

BP Meshed Coil-0.3Ω (35-40W)

BP Meshed Coil-0.3Ω (35-40W)

BP Meshed Coil-0.3Ω (35-40W)

BP Meshed Coil-0.3Ω (35-40W)

BP Meshed Coil-0.3Ω (35-40W)

BP Meshed Coil-0.3Ω (35-40W)

BP Meshed Coil-0.3Ω (35-40W)

BP Meshed Coil-0.3Ω (35-40W)

BP Meshed Coil-0.3Ω (35-40W)

BP Meshed Coil-0.3Ω (35-40W)

BP Meshed Coil-0.3Ω (35-40W)

BP Meshed Coil-0.3Ω (35-40W)

BP Meshed Coil-0.3Ω (35-40W)

BP Meshed Coil-0.3Ω (35-40W)

BP Meshed Coil-0.3Ω (35-40W)

BP Meshed Coil-0.3Ω (35-40W)

BP Meshed Coil-0.3Ω (35-40W)

BP Meshed Coil-0.3Ω (35-40W)

BP Meshed Coil-0.3Ω (35-40W)

BP Meshed Coil-0.3Ω (35-40W)

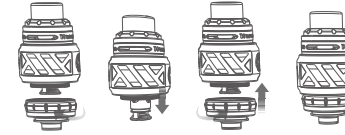
BP Meshed Coil-0.3Ω (35-40W)

Mod Specifications

Battery Type: External dual 18650 batteries (batteries not included)
Output Modes: WATT / VOLTAGE / BYPASS / TC / CPS
Output Wattage Range: 5-220W
Output Voltage Range: 0.5-9V
Adjustable Temperature Range: 200-600°F / 100-315°C
Recommended Resistance: 0.08-3.5Ω
Continuous Fire Time: 10s
Screen: 0.96" TFT color screen
Charging Port: Type-C
Max Charge Current: 2A
Mod Dimensions: 89.7 * 53.7 * 27 mm

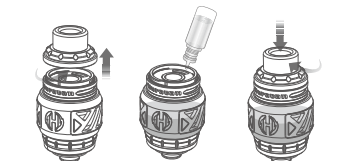
Coil Installation

1. Unscrew to remove the bottom hardware with force
2. Pull the used coil out with more force and push the new one in firmly
3. Screw the bottom hardware back with force



Tank Filling:

1. Remove the top cap by firmly unscrewing it
2. Add e-liquid
3. Firmly screw the top cap back

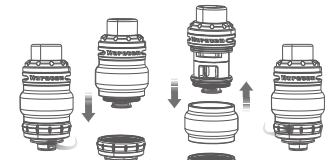


Note:

- When installing a new coil, let the tank stand for 5 minutes after filling so the cotton can be saturated with e-liquid before use.
- Do not let the tank become completely empty. Refill the tank to avoid dry burning or damage to the coil.

Tank Tube Replacement

1. Remove the bottom hardware by firmly unscrewing it
2. Hold the glass tube, place the thumb of the other hand on the coil and push out the used glass tube with much force
3. Push the new glass tube into the tank
4. Firmly screw the bottom hardware back

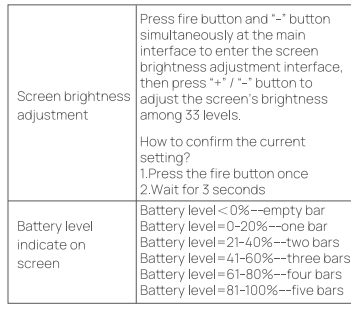


Remember to clean the condensation in the tank.



Instructions

Mod Condition	Status of Indicator Light & Details
Turn on / off	Toggle the power switch to the left to turn on the device, the mod will display "aspire"
Lock or unlock "+" & "-" buttons	Press the "+" & "-" buttons simultaneously to lock or unlock the buttons. When the "+" & "-" buttons are locked, only the fire button and power switch work.
Lock or unlock the mod	Press fire button 3 times continuously, the mod will display "LOCKED" for 5s and enter dormant state. (Only turn on / off function allowed in this state)
	Press fire button 3 times continuously when the mod is locked, the mod will display "UNLOCKED" for 5s and enter the main interface.



Parameters Setting

Step 1: Enter the main interface, the screen will display "BATTERY LEVEL", "MODE", "WATTAGE", "VOLTAGE", "CURRENT", "RESISTANCE" and "PUFFS".

Step 2: Press fire button and "+" button simultaneously to enter the menu adjustment.

* Immediately press fire button to switch the menu adjustment from top to bottom.

* Press "+" / "-" button to select the output modes among WATT, VOLTAGE, BYPASS, CPS, and TC-N / TC-T / TC-SS.

* Long press the fire button or wait 4 seconds to confirm and keep the settings.

Setting

Mode	Adjustment range	Operation and value setting
WATT	5-220W (Default: 5W)	5-100W: Press "+" / "-" button, 0.5W up / down per adjustment Long press "+" / "-" button, 1W rapid up / down 100-220W: Press "long press" "+" / "-" button, 1W rapid up / down
VOLTAGE	0.5-9V (Default: 4.65V)	Press "+" / "-" button, 0.01V up / down per adjustment Long press "+" / "-" button, 0.1V rapid up/down
BYPASS		The device will output the most the mod can do with the resistance of the coil on it.

CPS	5-220W (Default: 10W)	When "CPS" flashes then press fire button to select from the PUFF2/P3/PU5 mode Under PUFF2/P3/PU5 mode, press "+" / "-" button, 0.5W up / down per adjustment Press "+" / "-" button, 1°C / 1°F per adjustment Press "-" button at 100°F, it will switch to 600°F Press "+" button at 200°F, it will switch to 315°F Press "+" button at 315°F, it will switch to 200°F Press "-" button at 600°F, it will switch to 100°F
TC	200-600°F / 100-315 °C (Default: 200 °F)	

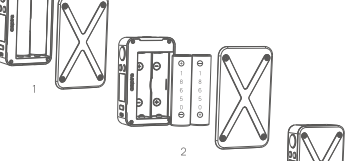
Note:

Under any mode, when switching to "Thuff", press "+" button, the puffs will return to the default value of 0000, and will only update present vaping puffs if you vape, press "-" button, the puffs will display the puff value of last time.

Safety Features

Vaping Over-Time Protection (10s)	The screen will display "10S OVER TIME"
Open Circuit Protection	The screen will display "CHECK ATOMIZER"
Short Circuit Protection	The screen will display "ATOMIZER SHORT"
Low Resistance Protection	The screen will display "LOW RES"
Low Voltage Protection	The screen will display "LOW BATTERY"
Overcharge Protection	The device will stop charging
Over Heat Protection	The screen will display "TOO HOT"
Abnormal Charge Protection	The screen will display "CHECK USB"
Battery Reverse Protection	The device will stop working

Battery Installation



Charging

Maximum charge current	2A
Recommended charge voltage	5V
Attach the type-C cable	The screen will display a growing battery icon
Fully charged	The screen will be on for 10s and then shut off
The charging voltage is over 6V or lower than 4.2V	The mod will stop charging and the screen will display "CHECK USB" for 5s

IMPORTANT INFORMATION ABOUT USING NICOTINE-CONTAINING E-LIQUIDS

Before using nicotine-containing e-liquid the user should read the following information carefully.

1. NICOTINE-CONTAINING E-LIQUID

If used with nicotine-containing liquid, it should be noted that nicotine which is a highly addictive substance and, therefore, is not recommended for use by non-smokers may produce toxic effects if consumed orally, especially in infants or children.

Do not use if you are allergic to nicotine or any of the other ingredients contained within the e-liquid (see manufacturer label for full details).

2. NICOTINE WARNINGS AND PRECAUTIONS

Nicotine-containing e-liquid is not recommended for:
• Non-smokers;
• Young people under the legal age;
• Pregnant or breast-feeding women, as nicotine is known to cross the placenta and to be excreted in breast milk.

FR

AVERTISSEMENT

Veuillez lire ce manuel d'utilisation avant utilisation. Le non-respect des instructions de configuration, d'utilisation et d'entretien de votre appareil peut augmenter le risque de blessures graves, de décès ou de dommages matériels.

Le fabricant n'assume aucune responsabilité pour tout dommage causé par une mauvaise manipulation hors du cadre de l'utilisation normale définie dans ce manuel.

CONFIGURATION RECOMMANDÉE

Nous recommandons l'utilisation exclusive du chargeur, de la batterie, des composants et des accessoires d'origine Aspire indiqués sur la page et la notice du produit. L'utilisation de chargeurs, de batteries, de composants et/ou d'accessoires non spécifiquement produits pour cet appareil peut entraîner un dysfonctionnement et/ou des dommages au produit et l'annulation de la garantie.

SÉCURITÉ DE MANIPULATION ET D'UTILISATION

Pour réduire les risques d'incendie, d'électrocution ou d'endommagement de votre vaporisateur, éloignez le produit et ses accessoires des conditions de surchauffe ou d'humidité excessive (<5°C / 50 °C).

Votre appareil peut être endommagé en cas de chute, de brûlure, de perforation, d'écrasement ou s'il entre en contact avec un liquide. Si vous pensez que votre appareil ou sa batterie sont endommagés, arrêtez d'utiliser votre appareil, car cela pourrait provoquer une surchauffe ou des blessures.

Pour éviter les mauvais allumages, assurez-vous toujours de verrouiller ou d'étendre votre appareil lorsqu'il n'est pas utilisé, en particulier lorsque vous transportez votre appareil dans votre poche, votre sac ou votre sac à main.

En cas de brûlure ou de déformation anormale de l'un des composants de l'appareil ou de ses accessoires, arrêtez immédiatement de l'utiliser et contactez le Service Client.

SÉCURITÉ D'ENTRETIEN DES RESISTANCES

Afin de ne pas altérer la résistance ou brûler le coton n'inhalez pas une pod vide. Laissez reposer le pod/atomiseur pendant 5 minutes après le remplissage afin que le coton puisse être saturé de e-liquide avant utilisation.

SÉCURITÉ DES BATTERIES REMPLAÇABLES

N'utilisez pas de batteries non rechargeables. N'utilisez pas de batteries endommagées ou de batteries dont l'emballage est déchiré ou endommagé. Débranchez la batterie du chargeur lorsque celui est complètement rechargé. N'utilisez pas votre appareil de vape pendant la charge.

SÉCURITÉ D'ÉLIMINATION DES PRODUITS

Ne jetez pas ce produit et la batterie dans l'environnement et ne jetez les composants du produit que dans des points de collecte d'élimination dédiés.

AVERTISSEMENT DE SÉCURITÉ SANTÉ

N'utilisez pas le produit si vous êtes enceinte, si vous êtes allergique, si vous êtes généralement malade ou si vous souffrez de troubles respiratoires et/ou cardiovasculaires.

Si vous ressentez des effets secondaires, arrêtez d'utiliser le produit, si les effets persistent après l'arrêt de l'utilisation, consultez immédiatement un professionnel de la santé.

Contenu :

- 1* Appareil Revolto
- 1* Atomiseur Huracan
- 1* Résistance Meshed BP 0.3Ω (préinstallée)
- 1* Résistance Meshed BP 0.17Ω
- 1* Protection du réservoir en TPU
- 1* Tube en verre de recharge
- 1* Jeu de joint torique
- 1* Câble Type-C
- 1* Manuel de l'utilisateur

Vue éclatée :



Dimensions du kit: 141.6 * 53.7 * 27 mm

Caractéristique de l'atomiseur :

Drip tip remplaçable 810

Capacité de l'atomiseur : 6.0 ml

Remplissage du e-liquide : Remplissage par le haut

Flux d'air : Ajustage du flux d'air par rotation

Compatible avec les résistances de la série BP

Résistance Meshed BP-0.15Ω (60-80W)

Résistance Meshed BP-0.17Ω (45-55W)

Résistance Meshed BP-0.3Ω (35-40W)

Résistance Meshed BP-0.3Ω (35-40W)

Résistance Meshed BP-0.3Ω (35-40W)

Résistance Meshed BP-0.3Ω (35-40W)

Résistance Meshed BP-0.3Ω (35-40W)

Résistance Meshed BP-0.3Ω (35-40W)

Résistance Meshed BP-0.3Ω (35-40W)

Résistance Meshed BP-0.3Ω (35-40W)

Résistance Meshed BP-0.3Ω (35-40W)

Résistance Meshed BP-0.3Ω (35-40W)

Résistance Meshed BP-0.3Ω (35-40W)

Résistance Meshed BP-0.3Ω (35-40W)

Résistance Meshed BP-0.3Ω (35-40W)

Résistance Meshed BP-0.3Ω (35-40W)

Résistance Meshed BP-0.3Ω (35-40W)

Caractéristique du Mod :

Batterie compatible : Batteries externes doubles 18650 (batterie non incluse)

Mode de sortie : WATT / VOLTAGE / BYPASS / TC / CPS

Plage de puissance : 5-220W

Plage de tension : 0.5-9V

Température ajustable : 200-600°F / 100-315°C

Écran supporté : 0.96-3.5"

Temps de vapotage continu : 10s

Résistance supportée : 0.08-3.5Ω

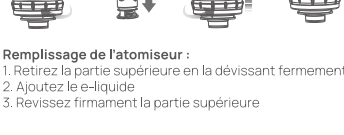
Chargement : Type-C

Courant de charge maximum : 2A

Dimensions du Mod : 89.7 * 53.7 * 27 mm

Remplacement de la résistance

1. Dévissez pour retirer le plateau inférieur avec force
2. Retirez la résistance usée avec force et pressez fermement une nouvelle résistance pour l'installer
3. Revissez fermement le plateau inférieur



Remplissage de l'atomiseur :

1. Retirez la partie supérieure en la dévissant fermement
2. Ajoutez le e-liquide
3. Revissez fermement la partie supérieure

