

aspire®



## R1 User Manual

Innovate the way  
you vape

EN

### SAFETY INFORMATION

For a safe and effective use of this product and its accessories, we advise you to read the following instructions in full, and to strictly observe the operating procedures indicated in this manual and refer to the leaflet contained in the packaging of the individual products / accessories. After reading, store it in a safe place for future reference. Incorrect handling of this product could possibly result in personal injury or physical damage. The manufacturer assumes no responsibility for any damage caused by mishandling that is beyond normal usage defined in this manual.

This product is intended for adult smokers. This product is not recommended for non-smokers, young people under the legal age, pregnant or breast feeding women and those experiencing general ill health.

Keep the product and its accessories out of reach of children and minors at all times!

### COMPONENTS OF THE PRODUCT

This product is a high-tech product and its components such as the battery, the USB cable, and the tank/pod part have been specifically made for this product. We recommend the exclusive use of components and accessories indicated. Use of components and / or accessories not specifically produced for this device may lead to a malfunction and / or damage to the product and to the cancellation of the warranty.

### WARNINGS BEFORE USE

The use of an empty, dry or drained tank/pod can cause immediate damage to the internal resistance and the consequent cancellation of the warranty.

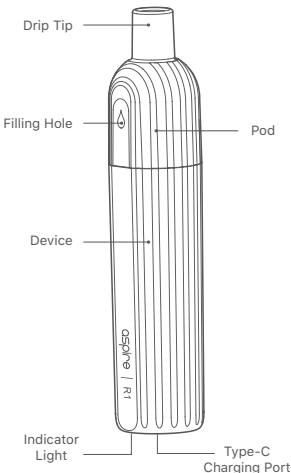
### GENERAL WARNINGS AND LIMITATIONS OF USE

Do not bring your vape device into contact with water or other e-liquid. Avoid exposing the device to too low or too high temperatures (-5 °C / 50 °C). Avoid using the product in overheated or excessively damp environments. Keep the product and its accessories away from heat sources. Use only Aspire original spare parts and accessories. Always discharge the battery completely before recharging. Carefully read the composition of the e-liquid before use, and do not use the product if you are allergic to any of the components of the e-liquid. Do not use the product if you suffer from respiratory and / or cardiovascular system disorders. Do not use the product during pregnancy or lactation. Do not ingest or swallow any part of the product or its accessories and do not try to open or tamper with the components of the product or its accessories. The device does not need any flame to light it. To avoid performance losses, disconnect the battery from the USB charger when fully recharged, and in the case of anomalies, smell of burnt or abnormal deformation of one of the components of the device or its accessories, stop using it immediately and contact Customer Care. Avoid direct contact of the e-liquid with the mouth which could happen if you inhale too strong and too frequently or if the tank is too full. Avoid any unauthorized operations that may damage the product. For an optimal performance of your vape device, it would be advisable to spend at least 30 seconds between one inhalation and the next. We recommend only to use the certified charger supplied to charge this device and not attempt to recharge the device with any other type of charger. We don't recommend using the product while charging. Do not discard this product in the environment, and dispose of the product components at dedicated collection/disposal points.

### Contents:

- 1\* R1
- 1\* User Manual
- 1\* Type-C Cable

### Components View:

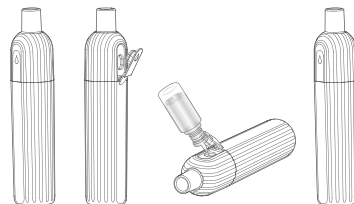


### Specifications:

- Pod capacity: 3.0 ml
- Built-in battery capacity: 650 mAh
- Output mode: 3.7V constant output
- Auto-draw, rechargeable, refillable, disposable
- Coil parameter: 0.8Ω (8-11W)
- Easy side fill
- Continuous fire time: 8s
- Dimensions: φ22 \* 100 mm
- Type-C charging port

### Pod Filling:

Lift the silicone seal and add e-liquid



- Let the device stand for 5 minutes after the first filling so the cotton can be saturated with e-liquid before use.
- Do not let the pod become completely empty. Refill the pod to avoid dry burning or damage to the coil.
- Please remember that this device can be draw activated. In order not to damage the coil or to burn the cotton, do not inhale from the drip tip before filling the pod.

### Instructions:

Device Status	Status of indicator light
In Charging	The LED light will be always on.
Vaping Over-Time Protection (8s)	The LED light will flash twice.
Short Circuit Protection	The LED light will be on for 2s.
Low Voltage Protection	The LED light will flash 10 times.
Fully Charged	The LED light will be off.

### IMPORTANT INFORMATION ABOUT USING NICOTINE CONTAINING E-LIQUIDS

Before using nicotine containing e-liquid the user should read the following information carefully.

### NICOTINE CONTAINING E-LIQUID:

Do not use if you are allergic to nicotine or any of the other ingredients contained within the e-liquid (see manufacturer's label for full details).

### WARNINGS AND PRECAUTIONS:

Nicotine containing e-liquid are not recommended for:

- Non-smokers
- Young people under the legal age;
- Pregnant or breast-feeding women; as nicotine is known to cross the placenta and to be excreted in breast milk;
- Those experiencing general ill health; such as heart disease, stomach and duodenal ulcers, liver or kidney problems, long term throat disease or difficulty breathing due to bronchitis, emphysema or asthma;

- Those who have an overactive thyroid gland or have a pheochromocytoma (a tumor of the adrenal gland that can affect high blood pressure);
- Those who have diabetes, as nicotine may affect your blood sugar levels.
- Those taking the following medication;
- Theophylline (to treat breathing problems)
- Ropinirole (to treat restless leg syndrome)
- Clozapine (to treat schizophrenia)

### POSSIBLE SIDE EFFECTS:

If you inhale too much nicotine or use the product too much you may experience one or more of the following effects:

- Feeling faint;
- Nausea (feeling sick)
- Headache
- Coughing
- Irritation of the mouth or throat
- Dizziness
- Stomach discomfort
- Hiccups
- Nasal congestion
- Vomiting (being sick)
- Heart palpitations
- Abnormal heart rate

If you experience any of these side effects; including any possible side effects not listed in this leaflet, discontinue using the product, if the effect(s) continue after you stop use, consult your doctor or healthcare professional and bring this leaflet to their attention.

### WARRANTY

Please visit our official website below to know our warranty policy and find an official after-sale support center in your country:  
<https://www.aspirecig.com/service/>

If your region doesn't have a support center, you can contact the retailer for service as normal.

### Important Information:

When requesting for warranty claims, kindly provide receipts or invoice purchased from vendor. Please also keep the original box containing the serial number and security code, or batch code for verification.

For detailed operating instructions, please visit:

Manual: <https://www.aspirecig.com/downloads/manuals/>

Video: <https://www.youtube.com/c/Aspirecigs>

### Shenzhen Eigate Technology Co., Ltd.

Floor 1-4, Building 3, No.14 Jian'an Road, Shajing Sub-district, Bao'an District, Shenzhen, Guangdong Province, China

Tel: +86-755-81499783

Email: [service@aspirecig.com](mailto:service@aspirecig.com)

To learn more about our products and how to use, please visit:  
[www.aspirecig.com](http://www.aspirecig.com)



Manufactured by Eigate  
**MADE IN CHINA**