

aspire® Puxos Kit User Manual

Read this information leaflet fully before you start using this product as it contains important information. The notes below relate to when the device is filled with e liquid that contains nicotine.

This product is intended for adult smokers. This product is not recommended for non-smokers, young people under the age of 18 years, pregnant or breast feeding women and those experiencing general ill health.



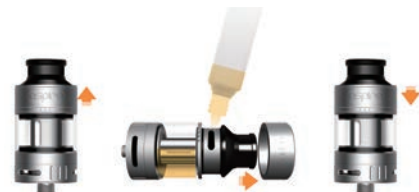
- Contents:**
- 1* Puxos mod
 - 1* Cleito Pro tank
 - 2* Coils (0.5Ω)
 - 1* Glass tube
 - 6* O-rings
 - 1* USB Cable
 - 1* 21700 battery
 - 1* 18650 battery adapter preinstalled
 - 1* Warning card
 - 1* User manual
 - 1* Warranty card

- Cleito Pro tank features**
- Super easy top fill
 - 3ml capacity
 - Bottom adjustable airflow
 - Coil compatible with Cleito and Cleito EXO tanks
 - Super efficient wicking
 - Massive vapor and flavor production
 - Diameter: 24mm
 - Length (including mouth piece): 46.6mm

- Cleito Pro tank filling**
1. Pull to release the top metal ring.
 2. Add your preferred e-liquid through the top side filling slot.
 3. Replace the top metal ring (Push the metal ring down firmly).

WARNING!

- When using a new atomizer, let the tank stand for 5 minutes after filling so the cotton can be saturated with e liquid before use.
- Do not let the tank become completely empty. Refill the tank to avoid dry burning or damage to the atomizer.



The filling hole is located above the three dots on the tank, to prevent leaking ensure that when sliding up the top ring to fill that the dots are uppermost.

- Cleito Pro Coil installation**
1. Unscrew to remove the drip tip.
 2. Pull to remove the top hardware.
 3. Unscrew and detach the used coil.
 4. Screw a new coil into the base hardware.
 5. Attach the top hardware and drip tip back to the tank.



- Specifications**
- Wattage range: 1-100W/1-80W
 - Output Voltage: 0.1-8.4V
 - Resistance Parameters: 0.1-3.5ohms
 - Continuous Fire Time can be adjusted from 5s to 15s
 - Charging Port: Micro-USB charging port
 - Screen: 0.96 inch OLED screen
 - Firmware updateable: N/A
 - Dimensions: 85*41*27mm
 - Battery type: Compatible with 18650/21700 and 20700 high rate discharge batteries

- Temperature Control**
- Temperature Range (F):200-600F
 - Temperature Range (C):100-315 C

- Protection Features**
- Automatic Cut Off
 - Short Circuit Protection
 - Low Resistance Protection
 - Overheat Protection
 - Over Charge Protection
 - Over Discharge Protection

- Instructions**
1. The mod will automatically turn on after installing battery, the screen will then display "18650" and "21700" choose the correct value according to the battery inserted, choose "18650" battery, the maximum output wattage of the mod is 80W, choose "21700" battery the maximum output wattage is 100W.
- NB: (1) when using an 18650 battery, it must be mounted in the supplied adapter.**
(2) When using a 20700 battery, select the same output as 21700 battery.

2. Press the fire button 5 times within 2 seconds to either lock or unlock the device. While the mod is locked, press the fire button for 3 seconds to turn the system off. To turn the mod back on, press the fire button 5 times rapidly.
3. Pressing fire button and down button simultaneously for 0.5 second to either lock or unlock keys, which is indicated by a lock symbol on the screen. While the keys are in locked mode, wattage or temperature settings cannot be adjusted but fire button still functions.
4. Pressing fire button and up button simultaneously for 0.5 second will allow you to select between Wattage, Voltage, Bypass, CPS (C1/C2/C3), TC(Ni/Ti/SS316L) and TCR(M1/M2/M3). Press up or down button to select modes, press fire button to select/confirm.
5. In wattage mode, the mod also allows you to adjust the strength settings, "H" indicates hard, "N" means Normal, "S" means soft.
6. TCR settings: While the mod is in TC mode, pressing up and down buttons simultaneously to enter or exit PWR and TCR settings. Pressing fire button to select between PWR and TCR, up and down button to change numbers, PWR numbers can be adjusted from 1W to 80/100W, while TCR range is from 0.10 to 9.99. (Note: TCR numbers for TC(Ni/Ti/SS316L) cannot be adjusted.)
7. When the mod is in CPS (Customizable Power Settings), pressing up and down buttons simultaneously will allow you to fine-tune your heat ramp-up (power curve). Press up or down button to change wattage, press fire button to select time from 1 to 10 seconds, pressing up and down buttons simultaneously again will exit your Customizable Power Settings.
8. While the mod is in TC mode attaching a new atomizer the mod will read "New Atomizer?" followed by "YES+/NO-". Select "YES+" and the mod will read the original coil resistance. Select "NO" and the mod will keep its previous coil resistance settings. (Note: To ensure accuracy, when first installing a new atomizer, make sure the screen is lit and the coil attached is at room temperature before attaching it to the mod.)
9. When the mod is on, press the fire button 3 times quickly to put the mod into or out of stealth mode, while in stealth mode the mod can still fire but the wattage or temperature settings cannot be adjusted.

10. Pressing the up and down buttons simultaneously for 2 seconds will allow you to adjust the screen brightness or manually rotate the screen, press up/down button to select between Brightness and Flip screen, press fire button to enter, when in screen brightness settings, press up/down button to adjust the brightness, press fire button to save and exit.

- Charging**
- Charging the Puxos via Micro-USB charging port, the maximum current can reach up to 2A.
 - Connect the mod to the charger and the screen will display a growing battery icon and the battery percentage. When the battery charge reaches 4.2V or is fully charged, the mod will stop charging and the screen will remain off.
 - The batteries cannot be replaced while charging. Please unplug the USB cable before changing your batteries.
 - When the battery charge drops below 1.5V or battery incorrectly installed the mod will stop charging.
 - When the mod detects the USB charge voltage is less than 4.3V or above 5.5V, it will stop charging and the screen will display "CHECK CHARGER".
 - To accomplish 2A charge current, the adaptor output should be 5V/2A.

- Battery installation**
1. Remove both the side panels.
 2. Remove the battery by pushing finger through the hole in one side.
 3. Replace with fresh battery.
 4. Replace both side covers.



IMPORTANT INFORMATION ABOUT USING NICOTINE CONTAINING E-LIQUIDS

Before using nicotine containing e-liquids the user should read the following information carefully.

NICOTINE CONTAINING E-LIQUIDS:
 Do not use if you are allergic to nicotine or any of the other ingredients] contained within the e-liquid (see manufacturer's label for full details).

- WARNINGS AND PRECAUTIONS**
- Nicotine containing e-liquids are not recommended for:
- Non-smokers
 - Young people under the age of 18 years;
 - Pregnant or breast feeding women; as nicotine is known to cross the placenta and to be excreted in breast milk;
 - Those experiencing general ill health; such as heart disease, stomach and duodenal ulcers, liver or kidney problems, long term throat disease or difficulty breathing due to bronchitis, emphysema or asthma;
 - Those who have an overactive thyroid gland or have a phaeochromocytoma(a tumour of the adrenal gland that can affect high blood pressure);
 - Those who have diabetes, as nicotine may affect your blood sugar levels.
 - Those taking the following medication;
 - Theophylline (to treat breathing problems)
 - Ropinirole (to treat restless leg syndrome)
 - Clozapine (to treat schizophrenia)

POSSIBLE SIDE EFFECTS

If you inhale too much nicotine or use the product too much you may experience one or more of the following effects:
 Feeling faint;

- Nausea (feeling sick)
 - Headache
 - Coughing
 - Irritation of the mouth or throat
 - Dizziness
 - Stomach discomfort
 - Hiccups
 - Nasal congestion
 - Vomiting (being sick)
 - Heart palpitations
 - Abnormal heart rate
- If you experience any of these side effects; including any possible side effects not listed in this leaflet, discontinue using the product, if the effect(s) continue after you stop use, consult your doctor or healthcare professional and bring this leaflet to their attention.

To learn more about your products and how to use, please visit: www.aspirecig.com

Shenzhen Eigate Technology Co., Ltd.

Building 3, Xinhongtai Industrial Park, 14 Jian'an Rd, Tangwei, Fuyong Town, Bao'an District, Shenzhen, China
 Tel: +86-755-81499783 Email: service@aspirecig.com

Manufactured By Eigate MADE IN CHINA

